

It's late August and Mumma Monarch's short life is almost complete.
She has done her best to lay a great many eggs.



Each egg is placed one at a time on a Milkweed leaf.
She will leave hundreds.



Like a small, shiny pearl. Easy to spot.



She selects young Milkweed plants. Maybe leaves are tender or fewer bugs?



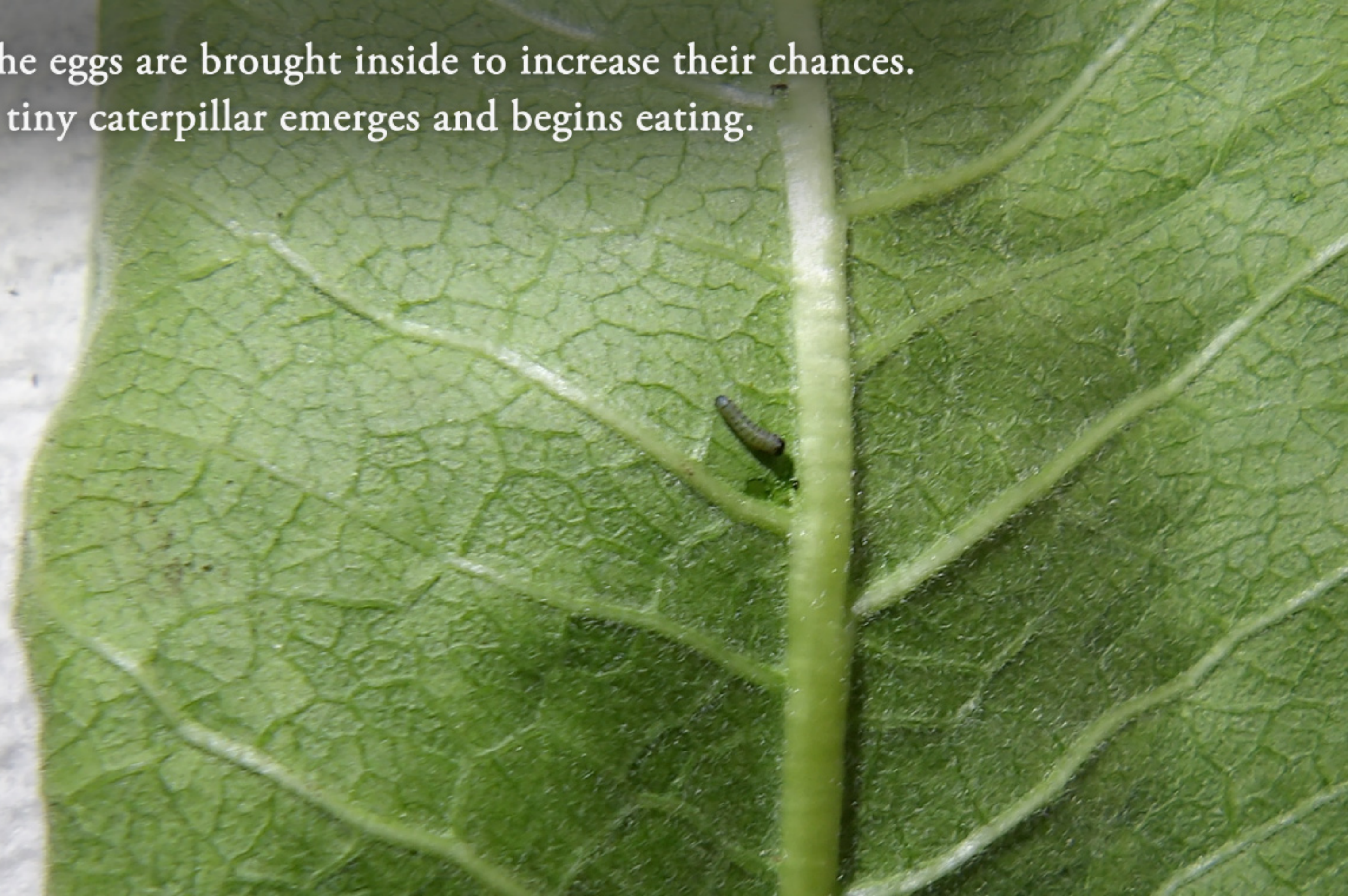




Sometimes more than one egg is placed.



The eggs are brought inside to increase their chances.
A tiny caterpillar emerges and begins eating.



They eat only Milkweed and grow rapidly.



More emerge.



Best to keep big and small apart. Small can disappear.





For about two weeks they eat and grow.



Then they secure themselves and hang in a J.



Soon after, the caterpillar skin peels back and the chrysalis is revealed.
It happens quickly.



Caterpillars inspecting chrysalis. Do they know who's inside?
Such a mystery.



One by one, they go into chrysalis.



Metamorphosis is happening inside. About two weeks to wait.



Chrysalis have distinctive markers that appear metallic.
What could they mean?



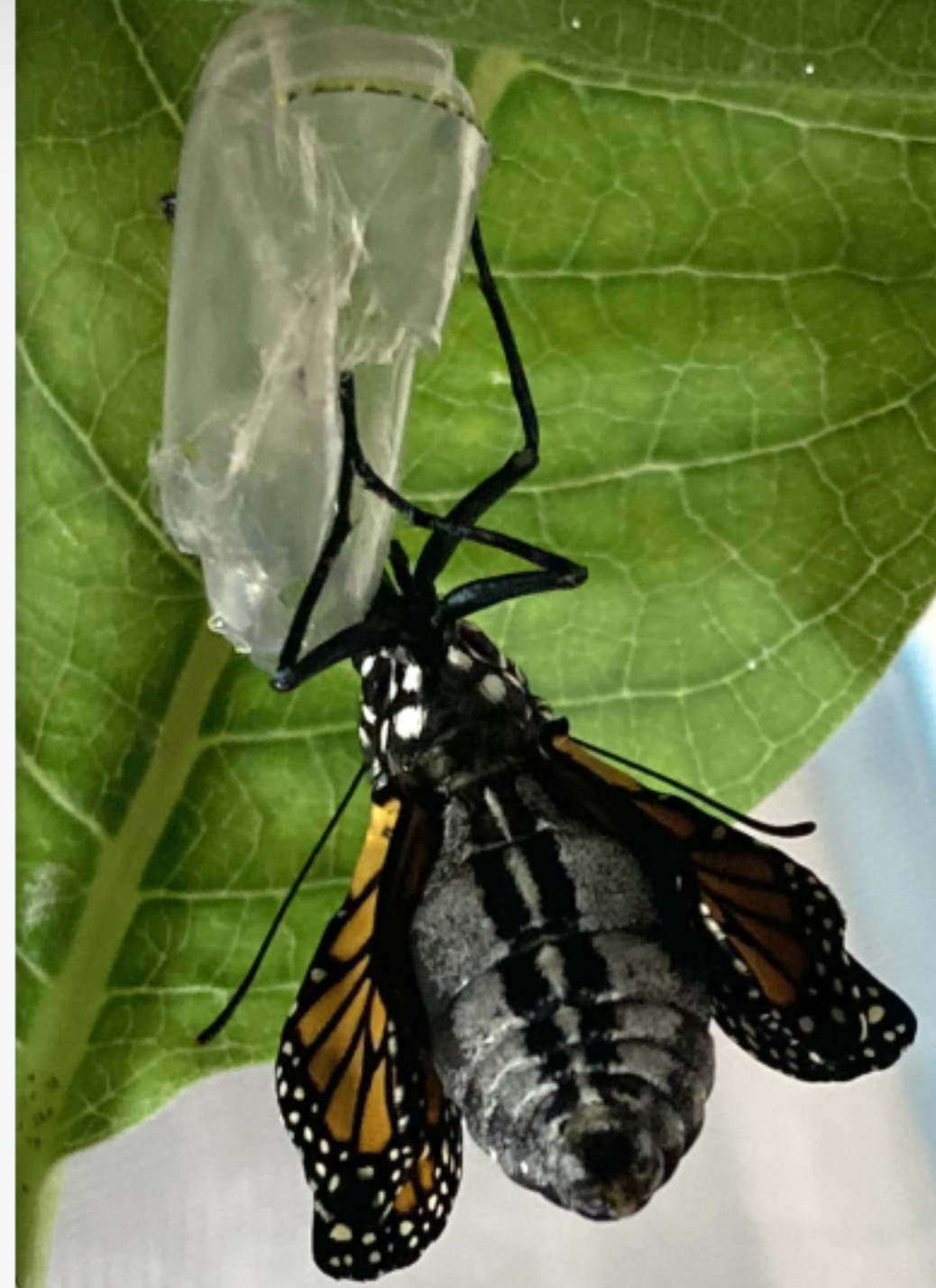
The chrysalis start to darken. They are close to opening.



When the chrysalis becomes clear, it's ready!



A Monarch emerges.



The wings expand quickly. It will take a day for them to dry out.



The second day they practice flapping.







They're ready for the world.



Once outside, only a few fly right away. Their first view of the sun.



Most sit on the flowers for awhile and prepare for their journey.



Some exercise their wings.



It's late Sept. This Super Generation will live for 8 months and fly 2500 miles south to a high mountain forest for the winter. In spring they will head north. How is this possible?



Learning to fly. A little clumsy at first. They will figure it out.

